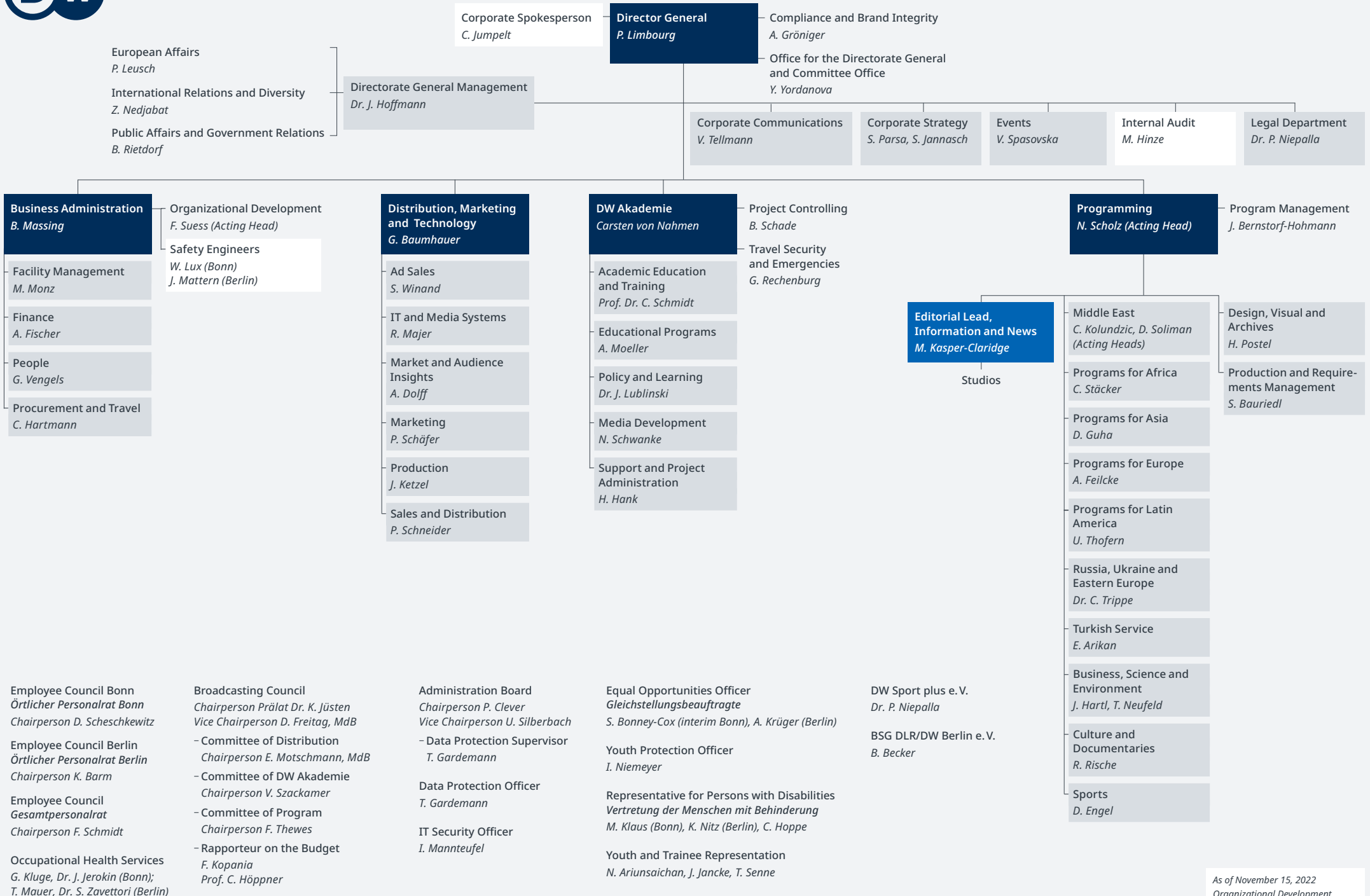




# ORGANIZATIONAL CHART



Employee Council Bonn  
Örtlicher Personalrat Bonn  
Chairperson D. Scheschkewitz

Employee Council Berlin  
Örtlicher Personalrat Berlin  
Chairperson K. Barm

Employee Council  
Gesamtpersonalrat  
Chairperson F. Schmidt

Occupational Health Services  
G. Kluge, Dr. J. Jerokin (Bonn);  
T. Mauer, Dr. S. Zavettori (Berlin)

Broadcasting Council  
Chairperson Prälat Dr. K. Jüsten  
Vice Chairperson D. Freitag, MdB

– Committee of Distribution  
Chairperson E. Motschmann, MdB  
– Committee of DW Akademie  
Chairperson V. Szackamer

– Committee of Program  
Chairperson F. Thewes  
– Rapporteur on the Budget  
F. Kopania  
Prof. C. Höppner

Administration Board  
Chairperson P. Clever  
Vice Chairperson U. Silberbach

– Data Protection Supervisor  
T. Gardemann

Data Protection Officer  
T. Gardemann

IT Security Officer  
I. Mannteufel

Equal Opportunities Officer  
Gleichstellungsbeauftragte  
S. Bonney-Cox (interim Bonn), A. Krüger (Berlin)

Youth Protection Officer  
I. Niemeyer

Representative for Persons with Disabilities  
Vertretung der Menschen mit Behinderung  
M. Klaus (Bonn), K. Nitz (Berlin), C. Hoppe

Youth and Trainee Representation  
N. Ariunsaichan, J. Jancke, T. Senne

DW Sport plus e.V.  
Dr. P. Niepalla

BSG DLR/DW Berlin e.V.  
B. Becker